



LE8R-5CCT

8" Round Economy Recessed 5CCT LED 18W



Type IC, Wet & Air-Tight

Project: _____

Location: _____

Model #: _____ Qty: _____

Notes: _____

DESCRIPTION

8" Round Recessed LED With Integral Driver In Connection Box

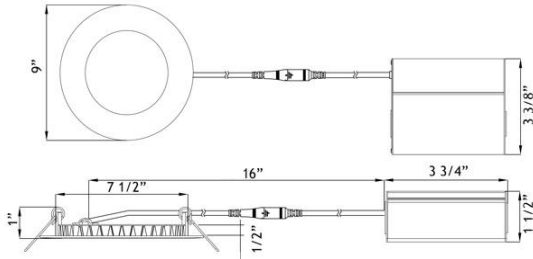
FEATURES & BENEFITS

- 5CCT user selectable 2700-3000-3500-4000-5000K
- 1/2" Thin - Install Directly Under Joists
- Maximum Layout Flexibility
- Driver Inside Connection Box - No Junction Box Needed
- Fast & Easy To Install - Save On Labor
- Type IC Rated - No Housing Required
- Available in 6 Pack for additional savings

MOUNTING

Cut Hole In Ceiling And Snap Fixture In Opening With Attached Spring Clips. Ceiling Clearance Required For Driver: 1 1/2"

DIMENSIONS: ID 7 1/2" OD 9" Cut Out 7 1/2" to 8"



120V TRIAC Dimmable Driver Included



ORDERING GUIDE

	Trim	Packaging
LE8R-5CCT-WH	White	Individually packaged, 10 per case
LE8R-5CCT-WH-6P	White	6 pack per box, 4 boxes per case total 24 fixtures

In stock is White trim only. Black is available as custom

SPECIFICATION

Applications	Recessed Ceiling, Showers & Soffits				
Energy Used	18 W				
Colour Temperature	2700	3000	3500	4000	5000
Light Output	1340	1430	1510	1560	1520
Halogen Equivalent	120 W				
Beam Angle	110°				
CRI	90 +				
Driver Input	120V AC	Triac Dimmable			
Junction Box Wire Capacity	Max 5 No 12 AWG or 8 No 14 AWG				
Power Factor	0.98				
Approved Location	Insulated Ceiling, Wet & Damp Locations				
IP Rating	IP 54				
Air Tight	Yes				
Ambient Temperature	-40°F (-40°C) to +104°F (+40°C)				
Projected Life	70% Light Output at 36,000 Hours				
Certification	c UL us				
Warranty	5 Year				

AVAILABLE TRIMS



White



Black

ACCESSORIES

Sold Separately



Low Voltage Extension Cables 10 ft FT4 / CMR rated
[model # EXC10](#)



[26" Long Flat Rough-In Plate model # RIP8](#)



[Goof Ring White OD 9 1/2" model # GR8](#)

[Goof Ring White OD 10 1/2" model # GR810](#)



Emergency Driver 8W 120-347V input
[model # BLD-HM08D-YYY](#)

COMPLIANCE



Type IC & Air - Tight
Wet Location

Lotus LED Lights USA

250 H Street # 301, Blaine WA 98230 tel 360-200-5500
Hainesport NJ, Naples FL, Vancouver WA

www.LotusLEDLights.com

mailing addresses
warehouses

Lotus LED Lights CANADA

1080 Cliveden Ave # 6, Delta BC V3M 6G6 tel 604-538-3090
Delta BC & Mississauga ON